



Gab 1 (phospho Tyr659) Polyclonal Antibody

Catalog No	YP-Ab-03593
Isotype	IgG
Reactivity	Human;Mouse;Rat
Applications	WB;IHC;IF;ELISA
Gene Name	GAB1
Protein Name	GRB2-associated-binding protein 1
Immunogen	The antiserum was produced against synthesized peptide derived from human GAB1 around the phosphorylation site of Tyr659. AA range:644-674
Specificity	Phospho-Gab 1 (Y659) Polyclonal Antibody detects endogenous levels of Gab 1 protein only when phosphorylated at Y659.
Formulation	Liquid in PBS containing 50% glycerol, 0.5% BSA and 0.02% sodium azide.
Source	Polyclonal, Rabbit,IgG
Purification	The antibody was affinity-purified from rabbit antiserum by affinity-chromatography using epitope-specific immunogen.
Dilution	Western Blot: 1/500 - 1/2000. Immunohistochemistry: 1/100 - 1/300. Immunofluorescence: 1/200 - 1/1000. ELISA: 1/5000. Not yet tested in other applications.
Concentration	1 mg/ml
Purity	≥90%
Storage Stability	-20°C/1 year
Synonyms	GAB1; GRB2-associated-binding protein 1; GRB2-associated binder 1; Growth factor receptor bound protein 2-associated protein 1
Observed Band	76kD
Cell Pathway	cytosol,
Tissue Specificity	Testis,Whole embryo,
Function	function:Probably involved in EGF and insulin receptor signaling.,PTM:Phosphorylated on tyrosine residue(s) by the epidermal growth factor receptor (EGFR) and the insulin receptor (INSR). Tyrosine phosphorylation of GAB1 mediates interaction with several proteins that contain SH2 domains.,similarity:Belongs to the GAB family.,similarity:Contains 1 PH domain.,subunit:Interacts with GRB2 and with other SH2-containing proteins. Interacts with phosphorylated LAT2.,
Background	GRB2 associated binding protein 1(GAB1) Homo sapiens The protein encoded by this gene is a member of the IRS1-like multisubstrate docking protein family. It is an important mediator of branching tubulogenesis and plays a central role in cellular growth response, transformation and apoptosis. Two transcript variants encoding different isoforms have been found for this gene. [provided by



RefSeq, Aug 2008],

matters needing attention

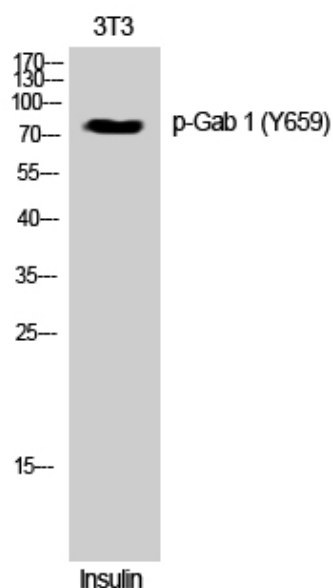
Avoid repeated freezing and thawing!

Usage suggestions

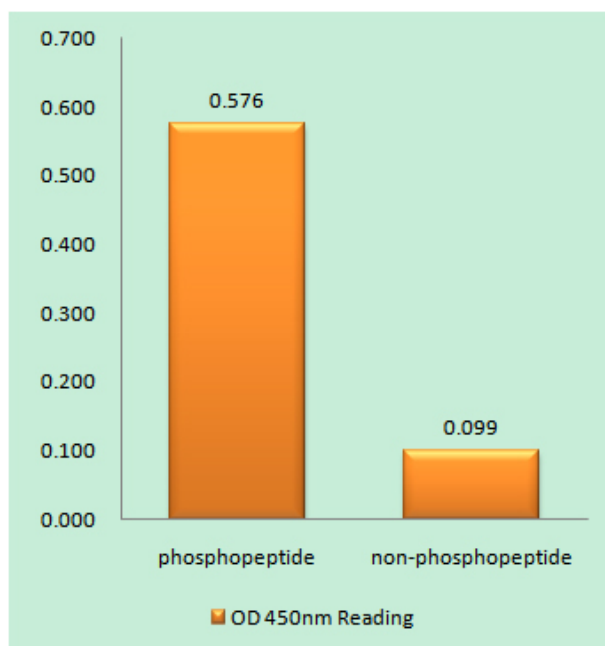
This product can be used in immunological reaction related experiments. For more information, please consult technical personnel.



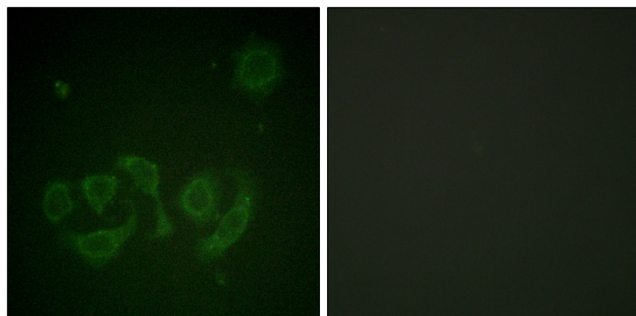
Products Images



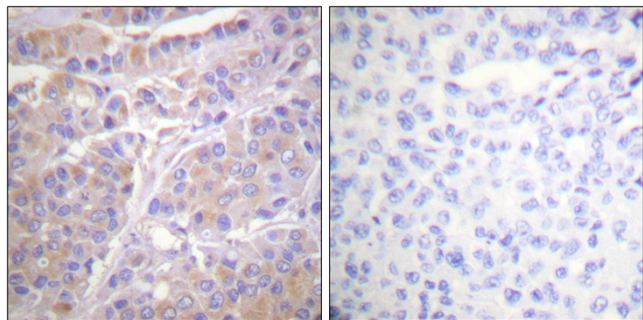
Western Blot analysis of 3T3 cells using Phospho-Gab 1 (Y659) Polyclonal Antibody



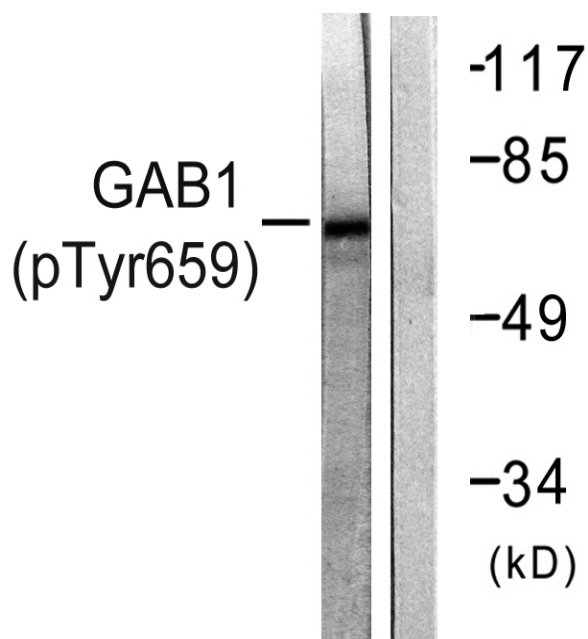
Enzyme-Linked Immunosorbent Assay (Phospho-ELISA) for Immunogen Phosphopeptide (Phospho-left) and Non-Phosphopeptide (Phospho-right), using GAB1 (Phospho-Tyr659) Antibody



Immunofluorescence analysis of HepG2 cell, using GAB1 (Phospho-Tyr659) Antibody. The lane on the right is blocked with the GAB1 (Phospho-Tyr659) peptide.



Immunohistochemistry analysis of paraffin-embedded human breast cancer, using GAB1 (Phospho-Tyr659) Antibody. The picture on the right is blocked with the GAB1 (Phospho-Tyr659) peptide.



Western blot analysis of GAB1 (Phospho-Tyr659) Antibody. The lane on the right is blocked with the GAB1 (Phospho-Tyr659) peptide.